



## COBRA

916P-017 S3 HI HRO SRC

Standard EN ISO 20345:2011

Sizes 38-48



Three-dimensional Spyder-Net lining with moisture absorption and release properties. Its special three-dimensional and non-deformable textile structure ensures lasting comfort, breathability and elasticity.

The SBX TPU stabilizer is designed to hold the ankle and ensure perfect balance control while walking. This provides stability, comfort and protection on irregular surfaces.

Two-component HYBRID PU-RUBBER HRO sole, developed to offer maximum performance in terms of safety and comfort. Slip-resistance sole tested to the SATRA laboratories on metal grating and wooden scaffold boards.



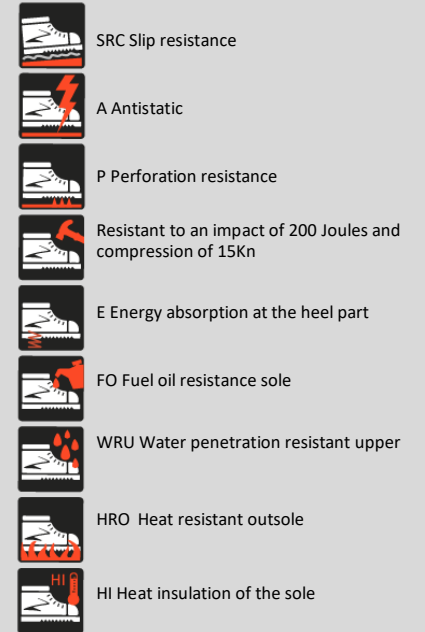
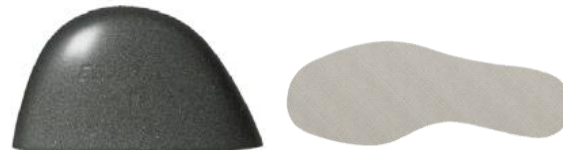
### HYBRID PU-RUBBER

- Rubber Outsole HRO
- Fuel oil resistance sole (FO)
- Self-cleaning cleated sole to ensure maximum adherence to the ground
- Excellent abrasion resistance
- Shock absorption cell

TPU protection elements applied on the collar and in the front area to guarantee protection from impacts and frictions.

Supremoil full grain leather with water resistance and breathability properties.

Steel toe cap and anti-puncture Txzero textile insert for extreme protection, lightness and flexibility.



The Esolight 1.0 polyurethane midsole made of low-density micro-cells increases energy absorption and provides a correct body weight distribution while walking.



### T-01

- Anatomic insole for more comfort
- Supporting PU foam = Dissipation and Energy Return
- Fully lined with conductive micro-perforated fabric to reduce foam wearing