



**EXTREME**

**924W-001 ASTM F 2413-11  
M/I/75 C/75 EH PR  
Standard ASTM F 2413-11  
Sizes 39 - 48**



Full grain Supremoil leather with high water repellence properties.

Dual component sole Ergonomic PU-Rubber: direct injection Esolight 1.0 midsole with the insertion of Rubber outsole.



**Outsole Ergonomic PU/RUBBER**

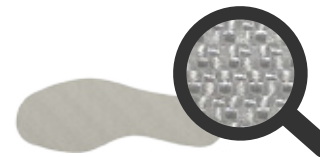
- Rubber outsole heat resistant.
- Fuel resistance
- Wide fit for maximum strength and protection
- Self cleaning profile
- Shock absorption cell



Thermal insulation lining Thinsulate® B200 keeps the foot warm in damp or wet conditions with superior active-breathing performance.

+ High absorption lining Cambrelle® to keep the foot warm in damp or wet conditions.

The asymmetric oblique toe cap with ergonomic shape ensures full comfort and stability. High tenacity textile anti-puncture insert Txzero ensures a higher level of safety by keeping a high comfort and flexibility.



- Slip resistant
- Perforation resistance
- Resistant to 200 joules
- Energy Absorption of seat region
- Fuel oil resistant sole
- Water penetration upper
- Heat-resistant outsole
- Cold insulation of the sole

The midsole with PU bump cap is made of the special microcell compound Esolight 1.0 that provides an excellent energy absorption. Esolight 1.0 provides a correct distribution of the body weight and impacts during walking, thus reducing the stress on the joints.