



ELEKTRO

204BB-02 S3 CI SRC

Standard EN ISO 20345:2011

Sizes 37 - 47



Zip with gusset.



Thermal insulation lining
Thinsulate® B200 keeps the foot warm in damp or wet conditions with superior active-breathing performance.

Full grain Idrotech leather with high water repellence properties.



SRC Slip resistant

A Antistatic

P Perforation resistance

Resistant to 200 joules

E Energy Absorption of seat region

FO Fuel oil resistant sole

WRU Water penetration upper

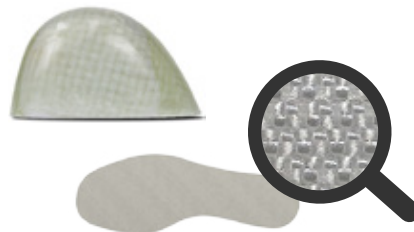
CI Cold insulation of the sole

Double density polyurethane sole
Icon PU/PU: utmost slip resistant sole designed to provide excellent all-round performances.



The midsole is made of the special microcell compound Esolight 1.0 that provides an excellent energy absorption. Esolight 1.0 provides a correct distribution of the body weight and impacts during walking, thus reducing the stress on the joints. The outsole is made of the Esolight 2.0 compound, for high durability and slip resistance.

PZX Fiberglass toe cap (200 Joule) and perforation resistant Txzero insole made of ultimate textile material, offering outstanding lightness, protection and flexibility.



Outsole ICON PU/PU

- SRC Slip resistant outsole
- FO Fuel resistance
- Wide fit for maximum strength and protection
- Grip on ladders
- Shock absorption cell

Icon · I-01

- Anatomic footbed made of open cell polyurethane foam
- Shock absorption area
- Extremely breathable
- Antibacterial Foam