



## TROY

**153BB-05 S1P ESD SRC**  
 Standard EN ISO 20345:2011  
 Sizes 37 - 47

Three-dimensional Spyder-net lining: high performance tight-knit three-dimensional structure textile gives an exceptional comfort and keeps the feet dry.

Double density polyurethane sole Icon PU/PU: utmost slip resistant sole designed to provide excellent all-round performances.



### Outsole ICON PU/PU

- SRC Slip resistant outsole
- FO Fuel resistance
- Wide fit for maximum strength and protection
- Grip on ladders
- Shock absorption cell

Fast and perfect fit closure.

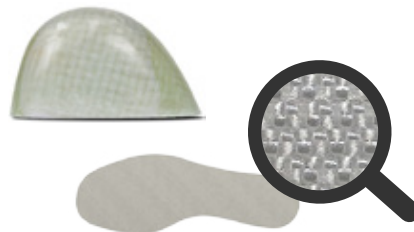
Extremely breathable upper: the Microtech microfiber is composed of a weave of nylon fibers combined with polyurethane in order to give characteristics very similar to those of real leather.



|  |   |
|--|---|
|  | <b>SRC</b> Slip resistant                 |
|  | <b>A</b> Antistatic                       |
|  | <b>P</b> Perforation resistance           |
|  | Resistant to 200 joules                   |
|  | <b>E</b> Energy Absorption of seat region |
|  | <b>FO</b> Fuel oil resistant sole         |



PZX Fiberglass toe cap (200 Joule) and perforation resistant Txzero insole made of ultimate textile material, offering outstanding lightness, protection and flexibility.



The midsole is made of the special microcell compound Esolight 1.0 that provides an excellent energy absorption. Esolight 1.0 provides a correct distribution of the body weight and impacts during walking, thus reducing the stress on the joints. The outsole is made of the Esolight 2.0 compound, for high durability and slip resistance.

### Icon · I-01

- Anatomic footbed made of open cell polyurethane foam
- Shock absorption area
- Extremely breathable
- Antibacterial Foam

