



BOLIVAR

131BB-06 S3 SRC

Standard EN ISO 20345:2011

Sizes 37 - 47



The pull loops provides an easy-on comfort fit.

Maximum durability and stability thanks also to TPU protective element applied on the heel.

Double density polyurethane sole Icon PU/PU: utmost slip resistant sole designed to provide excellent all-round performances.



Outsole ICON PU/PU

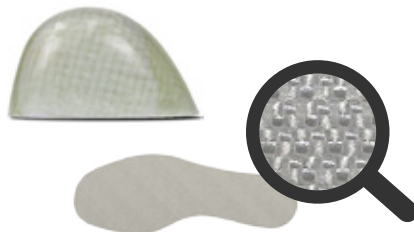
- SRC Slip resistant outsole
- FO Fuel resistance
- Wide fit for maximum strength and protection
- Grip on ladders
- Shock absorption cell

Unlined for an excellent breathability.

Triple stitching on the toe with high tenacity yarn.

Full grain Idrotech leather with high water repellence properties.

PZX Fiberglass toe cap (200 Joule) and perforation resistant Txzero insole made of ultimate textile material, offering outstanding lightness, protection and flexibility.



SRC Slip resistant



A Antistatic



P Perforation resistance



Resistant to 200 joules



E Energy Absorption of seat region



FO Fuel oil resistant sole



WRU Water penetration upper

The midsole is made of the special microcell compound Esolight 1.0 that provides an excellent energy absorption. Esolight 1.0 provides a correct distribution of the body weight and impacts during walking, thus reducing the stress on the joints. The outsole is made of the Esolight 2.0 compound, for high durability and slip resistance.

Icon · I-01

- Anatomic footbed made of open cell polyurethane foam
- Shock absorption area
- Extremely breathable
- Antibacterial Foam

